

Artist Paul S Miller's portraits and self-portraits use a variety of painting and drawing techniques, including the traditional medium of "egg tempera", to share his deeply personal insights into life.

Subjective frame-Personal, psychological experience

When discussing an artwork through this frame, you are expected to convey a personal response. Explore how the artwork makes you feel and why. You will also need to talk about the artist's expression, the individual style of the artwork and who their inspiration for that style may have come from.

Subjective frame - Key Words and Terms

Emotion, feelings, experiences, imagination, psychological experience, opinions, personal reactions, evocative, subconscious, intentions, memories, interpretations, mood, themes



What technique does the artist use?

.....

.....

.....

Describe how colour is used in this painting

.....

.....

.....

.....

What feeling is conveyed by the artist's body language?

.....

.....

.....

.....

Waiting to draw my breath, 2017, pastel on paper, 50 x 141cm



Batboy, 2013, egg tempera on panel, 120cm x 90cm

Describe what you see in the artwork?

.....

.....

.....

.....

What is the symbolic value of the costume?

.....

.....

.....

In your diary research the egg tempera technique.



Cold Day for a Bush Picnic (after McCubbin), 2017, egg tempera on panel, 120 x 180cm

How are colours and shapes used to evoke emotions in the painting?

.....

.....

.....

Describe the relationship between the figures and the audience looking at the painting?

.....

.....

.....

.....

Structural frame- Communication, system of signs

When discussing an artwork through this frame you need to consider how it can be read and how its meaning understood, in terms of how specific symbols refer to the world.

You will discuss how information is conveyed in artworks, what the formal and organisational relationships in a work mean, and how the artwork shows a visual language at a certain time and over time.

Structural frame- Key words and terms

Medium, composition, signs, symbols, language, visual codes, techniques, forms, direction, colour, tone, texture

Compare 'Greg Warburton' with one of the portraits above. How are the paintings alike? (This painting was a finalist in the Archibald Prize)

.....

.....

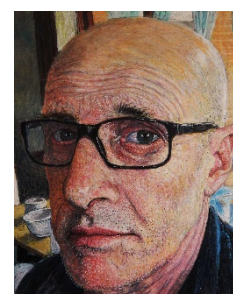
How are they different?

.....

.....

.....

Which do you prefer? Why?



Greg Warburton, 2014, egg tempera on panel, 36 x 45cm